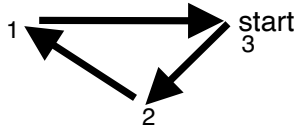


Drunken Sailor - Elise Hayden Duet Concertina

This tune is in D dorian mode which has no sharps or flats

arr. Daddy Long Les



Dm Verse pull

Dm

A
R2B3
What shall we do with the

D **F** **A**
R1B2 R2B1 R2B3
drunk - en sai - lor?

try playing just the pairs of notes in the bass line only (the "pahs")

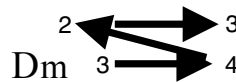


C push

C

G
R2B2
What shall we do with the

C **E** **G**
R1B1 R1B3 R2B2
drunk - en sai - lor?



Dm pull

Dm

A
R2B3
What shall we do with the

B **C** **D**
R2B4 R3B2 R3B3
drunk - en sai - lor?

7 **Dm push** **C** **Dm**

C R3B2 Ear - ly A R2B3 G R2B2 in E R1B3 the D R1B2 morn - ing D

D minor chord

9 **Dm**
Chorus
pull

Dm

A R2B3 Hoo - ray and up she ri - ses

11 **C**
push

C

G R2B2 Hoo - ray and up she ri - ses

13 **Dm**
pull

Dm

A R2B3 Hoo - ray and up she ri - ses

15 **Dm**
push

C **Dm**

C R3B2 Ear - ly in the morn - ing

D minor chord